



Version 3.x

# VirtualIQ Pro

## Windows Server 2008 Hyper-V Settings

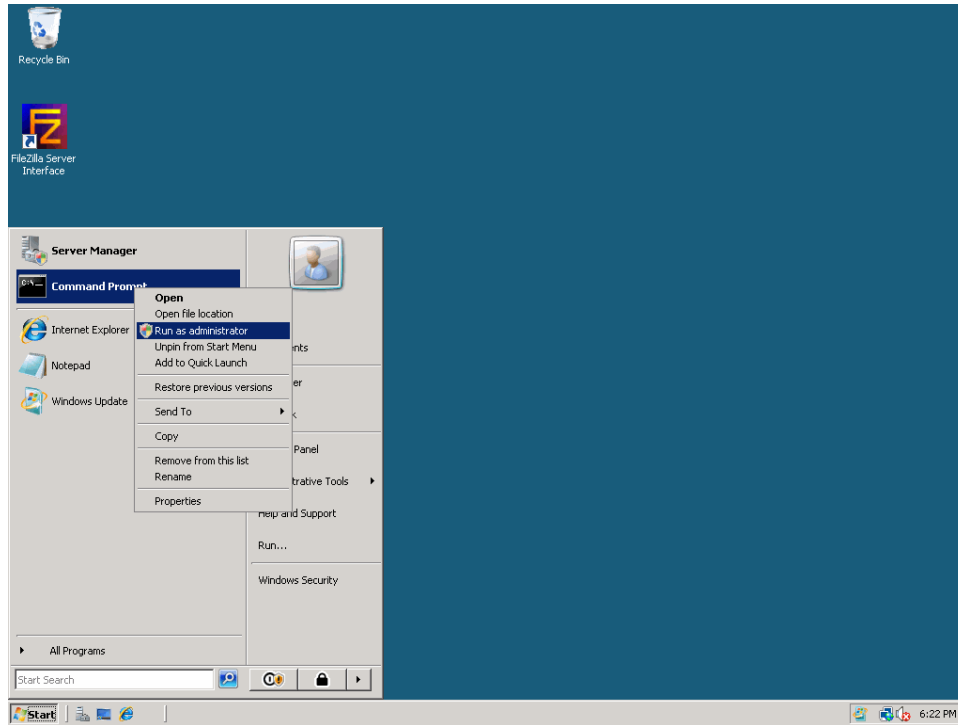
real solutions  
for  
virtual problems





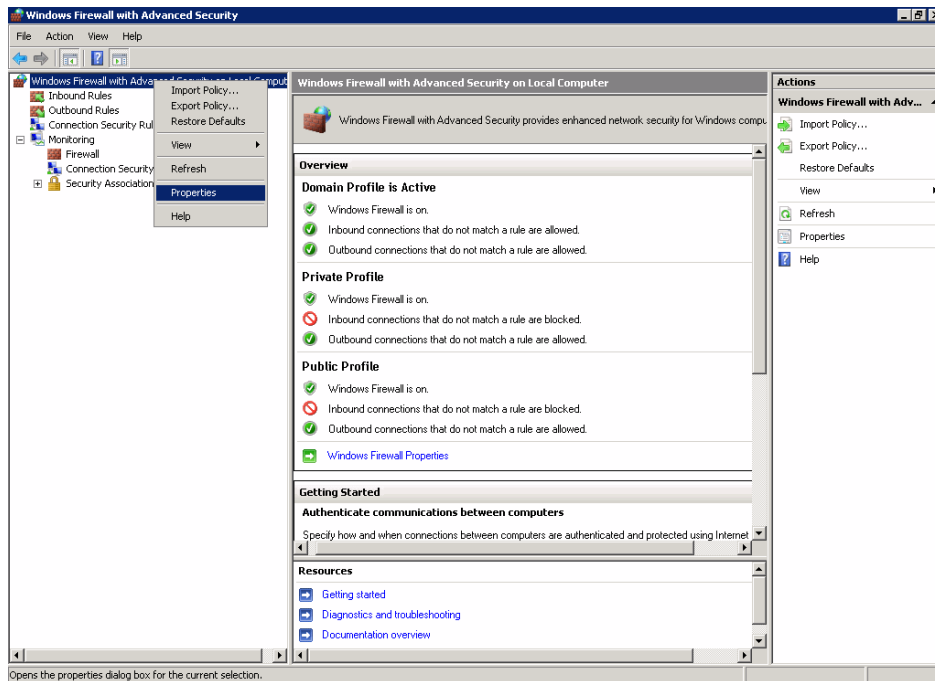
### Steps to enable the monitoring of Hyper-V

1. Login to system using administrator or with admin level user
2. Download the HVRemote.wsf file from following site:  
<http://code.msdn.microsoft.com/HVRemote/Release/ProjectReleases.aspx?ReleaseId=1803>
3. Create HVRemote folder on C:\
4. Copy HVRemote.wsf file under HVRemote folder
5. Open elevated command prompt. (To open elevated command prompt, click on start button → Right click on command prompt listed under start menu → Select 'Run as administrator' from the options available on the right click menu)

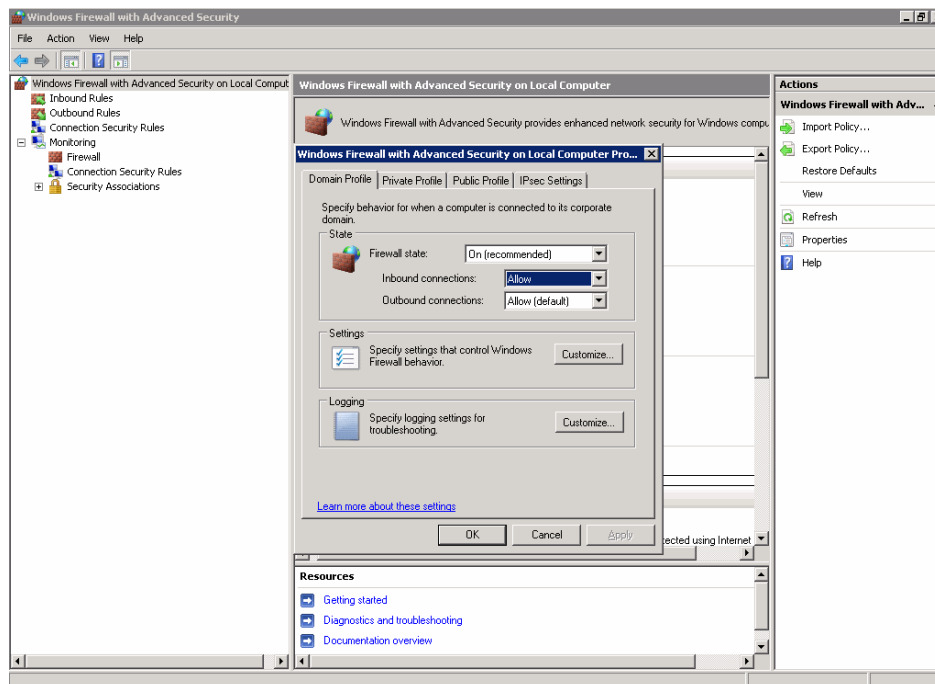


6. Go to HVRemote folder from this command prompt
7. Execute following command: **cscript HVRemote.wsf /show**
  - a. The above command shows the current setting on the machine. It's advisable to save the output in text file for future reference.
8. Execute following command: **cscript HVRemote.wsf /add:domain\user**
  - a. In the above command domain\user will be the domain name and user id to which the permission will be granted to remotely manage the hyper-V.
  - b. For example: **cscript HVRemote.wsf /add:toutvirtual\iquser**
9. **Reboot the Hyper-V machine** after running above command
10. Go to Start menu → Administrative tools → Windows firewall with advance security

11. Right click on 'Windows firewall with Advanced Security' on Local Computer
12. Select Properties



13. On Domain profile tab → Under State section → Change the Inbound connections setting from **Block (default)** to **Allow**



14. Click ok

15. Now the Hyper-V machine is ready for VirtualIQ Professional
16. From VirtualIQ Professional using *Add Host Dialog Box*, add the Hyper-V machine for management
17. You need to use the **same userid** that was granted the rights to remotely manage hyper-V in step 8. Refer to the screenshot below, **toutvirtual/iquser** is used for adding hyper-V host. It is the **same user that was granted remote monitoring permission** in step 8b example.

